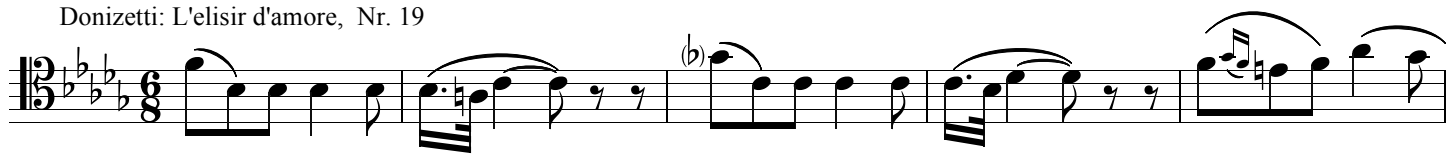


The Most Famous BassoonSoli

From Film, Opera And Symphonie

arranged by Nikolaus Maler

Donizetti: L'elisir d'amore, Nr. 19



Mozart: Figaro, Ouverture



Beethoven: Violin Concerto



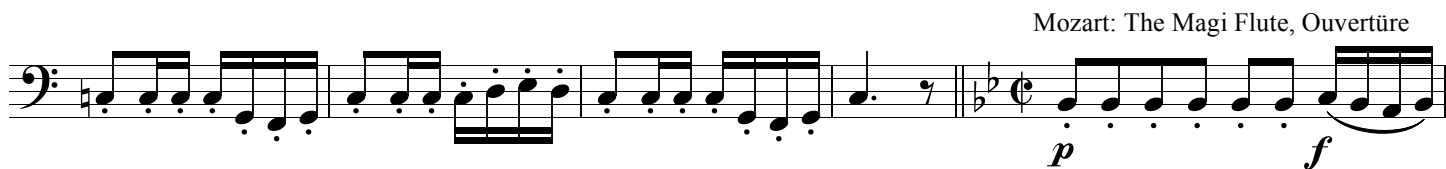
Mozart: Don Giovanni, Ouverture



Bizet: Carmen, Nr. 25



Mozart: The Magi Flute, Ouverture



p *f* *p* *f* *p* *f* *p*

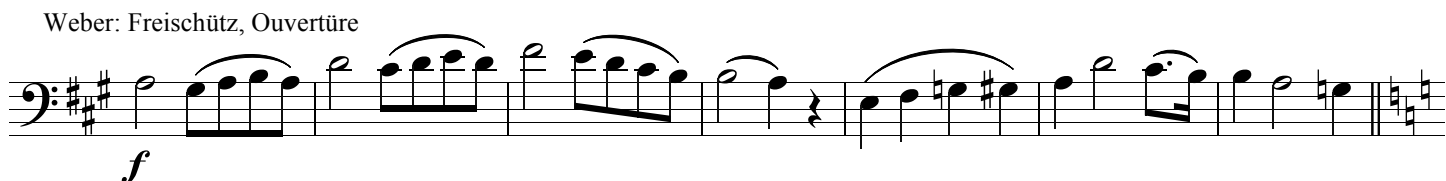
Beethoven: Sinfonie N° V



Schumann: Sinfonie N° IV



Weber: Freischütz, Ouverture



Rossini: Barbier de Sevilla, Ouverture

Two staves of musical notation. The first staff is in bass clef with a key signature of one sharp (F#) and a 2/4 time signature. The second staff is in bass clef with a key signature of one sharp (F#) and a 3/4 time signature. The music features a mix of eighth and sixteenth notes, with some triplet markings.

Verdi: Rigoletto, "La donna e mobile"

Two staves of musical notation. The first staff is in bass clef with a key signature of one sharp (F#) and a 3/4 time signature. The second staff is in bass clef with a key signature of one sharp (F#) and a 4/4 time signature. The music consists of eighth and sixteenth notes with accents and slurs.

Ravel: Bolero

Powell: The Bourne Identity

Two staves of musical notation. The first staff is in bass clef with a key signature of two flats (Bb, Eb) and a 3/4 time signature. The second staff is in bass clef with a key signature of two sharps (F#, C#) and a 3/4 time signature. The music features a mix of eighth and sixteenth notes with slurs and accents.

Stravinsky: Sacre

Two staves of musical notation. The first staff is in bass clef with a key signature of two sharps (F#, C#) and a 4/4 time signature. The second staff is in bass clef with a key signature of two sharps (F#, C#) and a 4/4 time signature. The music features a mix of eighth and sixteenth notes with slurs and accents.

Williams: Harry Potter

Two staves of musical notation. The first staff is in bass clef with a key signature of two flats (Bb, Eb) and a 3/4 time signature. The second staff is in bass clef with a key signature of two flats (Bb, Eb) and a 3/4 time signature. The music features a mix of eighth and sixteenth notes with slurs and accents.

Duka: The Sorcerer's Apprentice

Two staves of musical notation. The first staff is in bass clef with a key signature of two flats (Bb, Eb) and a 4/4 time signature. The second staff is in bass clef with a key signature of two flats (Bb, Eb) and a 2/4 time signature. The music features a mix of eighth and sixteenth notes with slurs and accents. The word "rit." is written at the end of the second staff.

Tschaikowski: Sinfonie N° IV

Two staves of musical notation. The first staff is in bass clef with a key signature of two flats (Bb, Eb) and a 2/4 time signature. The second staff is in bass clef with a key signature of two sharps (F#, C#) and a 4/4 time signature. The music features a mix of eighth and sixteenth notes with slurs and accents.

Jürgens: Der Mann mit dem Fagott

Two staves of musical notation. The first staff is in bass clef with a key signature of one sharp (F#) and a 4/4 time signature. The second staff is in bass clef with a key signature of one sharp (F#) and a 2/4 time signature. The music features a mix of eighth and sixteenth notes with slurs and accents.

Grieg: In The Hall Of The Mountanking

Two staves of musical notation. The first staff is in bass clef with a key signature of one sharp (F#) and a 4/4 time signature. The second staff is in bass clef with a key signature of one sharp (F#) and a 4/4 time signature. The music features a mix of eighth and sixteenth notes with slurs and accents.

Prokofjew:
Peter And The Wolf, Grandfather

Two staves of musical notation. The first staff is in bass clef with a key signature of one sharp (F#) and a 4/4 time signature. The second staff is in bass clef with a key signature of one sharp (F#) and a 4/4 time signature. The music features a mix of eighth and sixteenth notes with slurs and accents.